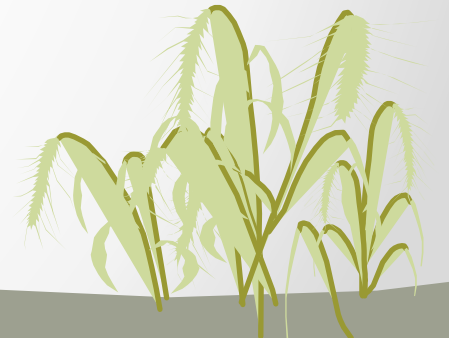
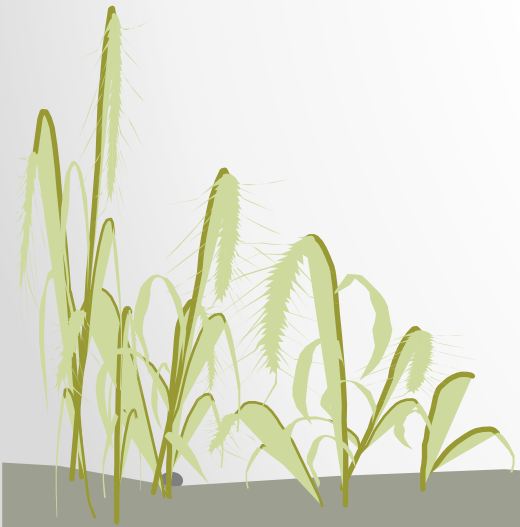


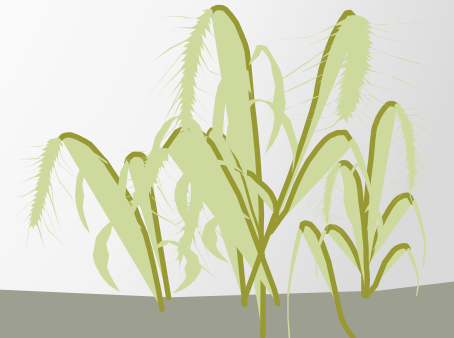
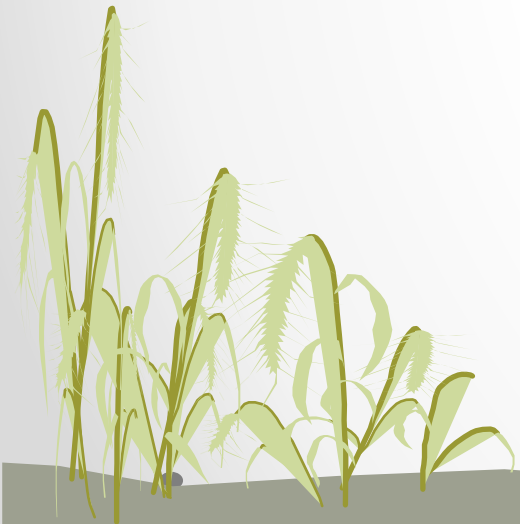
Entomology

Study of insects

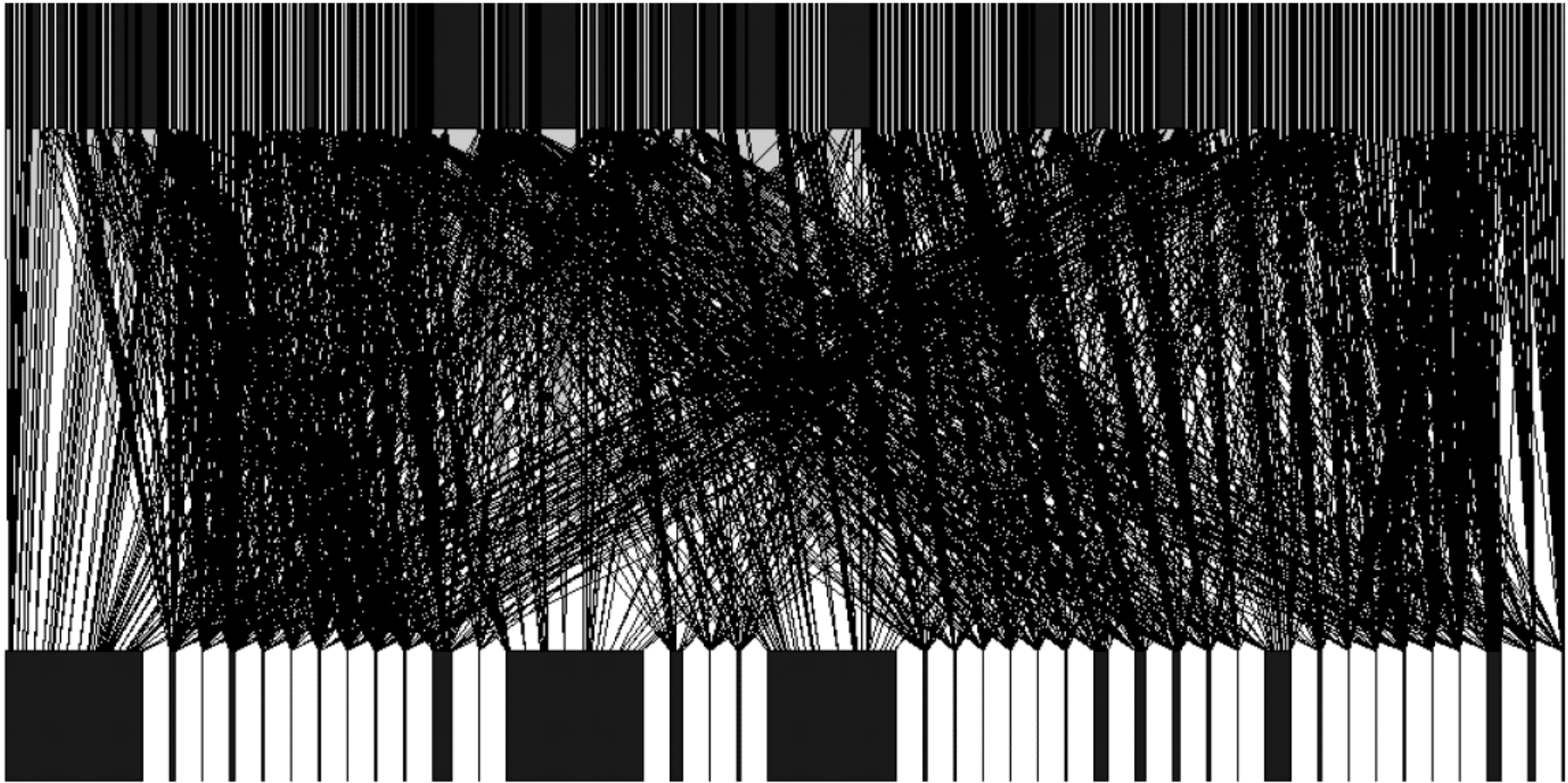
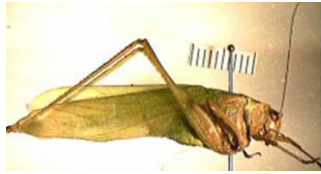
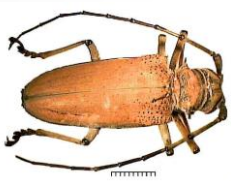


Common insect orders

- Coleoptera
 - Beetles
- Diptera
 - Flies & Mosquitoes
- Lepidoptera
 - Butterflies & Moths
- Hymenoptera
 - Bees & Ants
- Hemiptera
 - True bugs
- Orthoptera
 - Grasshoppers & Crickets
- Homoptera
 - Leaf hoppers & Aphids
- Odonata
 - Dragon flies
- Blattodea
 - Cockroaches
- Mantodea
 - Mantids (*Praying mantids*)
- Isoptera
 - Termites

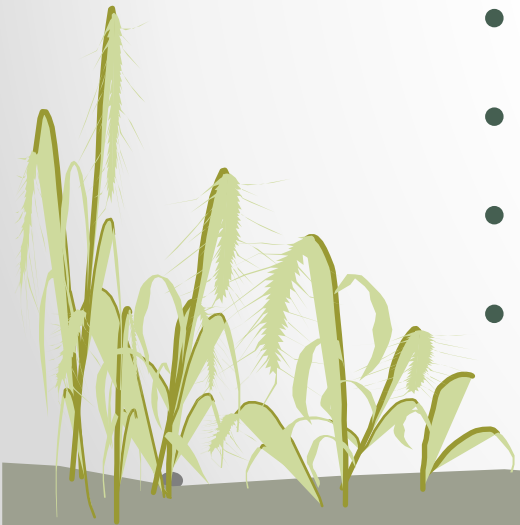


Food web including folivorous herbivores on 38 tree species in a New Guinean rainforest

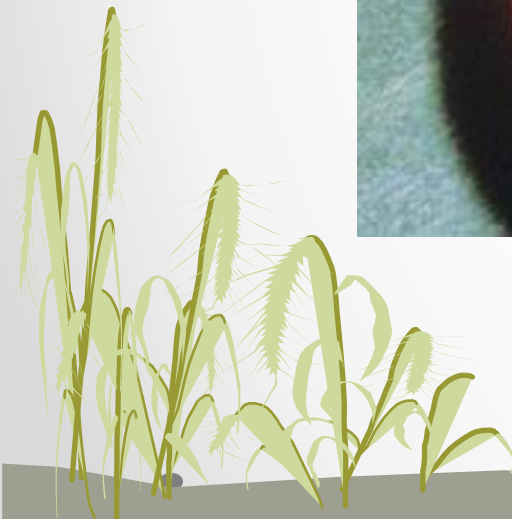


Insect Monitoring techniques

- Light
- Baits (Tuna, cordial, etc.)
- Lures (Pheromones)
- Net
- Pitfall traps
- Malaise trap
- Whinkler
- Rearing
- Hand search (cutting woods and nests)



Fruit fly (Diptera: Tephritidae)



Fruitfly Pheromone trapping

Steiner traps
(ME, Cue & Zingerone lures)



Trap servicing
(48 hours)



Assortment, Identification &
Reference collection



Moth Light Trapping

Light trap set-up



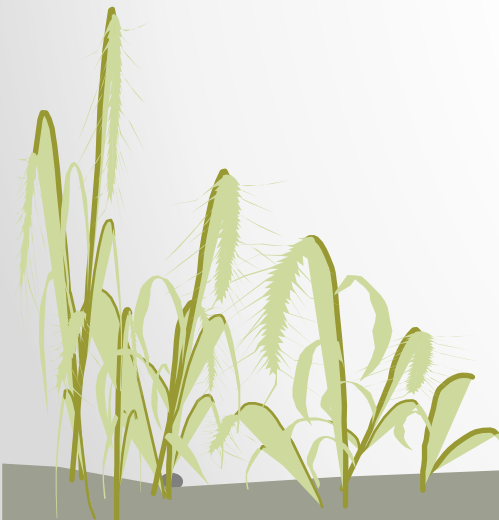
Collection of Geometrid moth using killing jars



Lab sorting, identification, data basing & reference collection



Field Sorting into Morpho-species



Ant Ground Sampling design

1. Tuna Bait

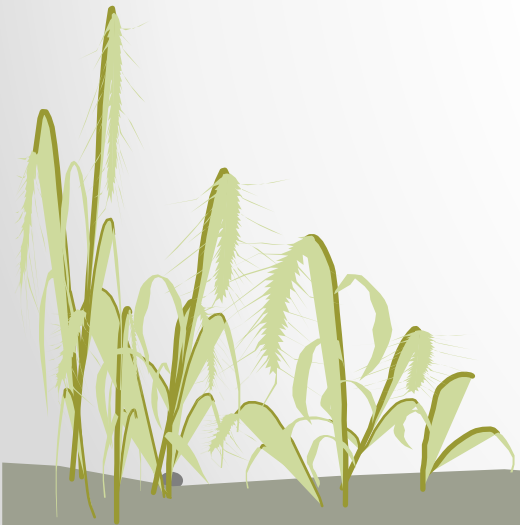


2. Hand Collection



Other sampling methods

- Whinkler
- Sweep net



END

